

Citizen codesign leads to a vision of social intensification

Jenny Stenberg | Associate Professor | Chalmers Architecture | Sweden



• research

• community outreach

• education



Citizen codesign leads to a vision of social intensification

Jenny Stenberg | Associate Professor | Chalmers Architecture | Sweden

Applying the compact city concept to a Swedish large-scale housing area by integrating research, education and community outreach

*Jenny Stenberg, Liane Thuvander,
Jaan-Henrik Kain & Marco Adelfio*

Department of Architecture,
Chalmers University of Technology, Sweden



Citizen codesign leads to a vision of social intensification

Jenny Stenberg | Associate Professor | Chalmers Architecture | Sweden

- explores the linking of research, education and community outreach
- asks how students can initiate and drive collaborative knowledge production processes to develop knowledge about locally relevant urban qualities
- discusses three potential positive outcomes of such linking of research, education and community outreach:
 - a) the research activities themselves may improve;
 - b) there may be a positive impact on student learning;
 - c) better valorization of research may be achieved.

Compact Cities?

Exploring qualities, drivers and strategies for promoting mixed-use urban development

The project aims to contribute to a more precise and useful understanding of which qualities a compact city needs to include

Research project
2014-2017



- qualities
- drivers
- strategies



Jaan-Henrik Kain, Jenny Stenberg, Liane Thuvander, Marco Adelfio

Photo: Stenberg & Kain

Compact Cities?

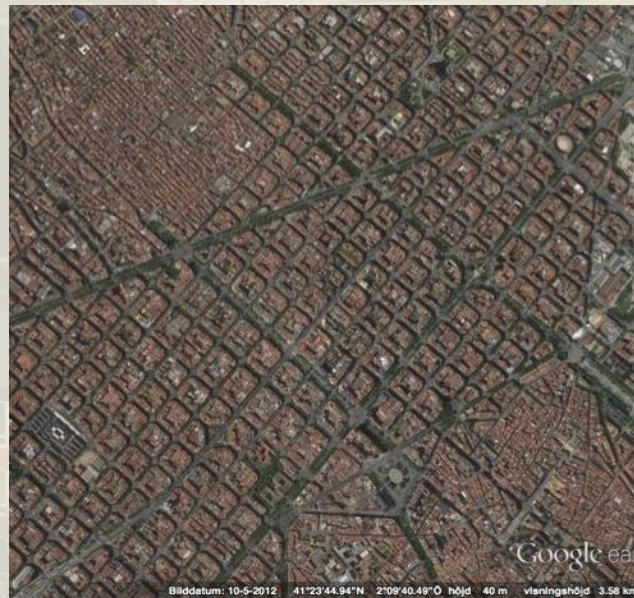
Exploring qualities, drivers and strategies for promoting mixed-use urban development

Urban density is studied in three cities:

Barcelona

Rotterdam

Gothenburg



A very dense city:

- + Culture, innovation and quality of life
- Air pollution and lack of public and green space



A densifying dispersed city:

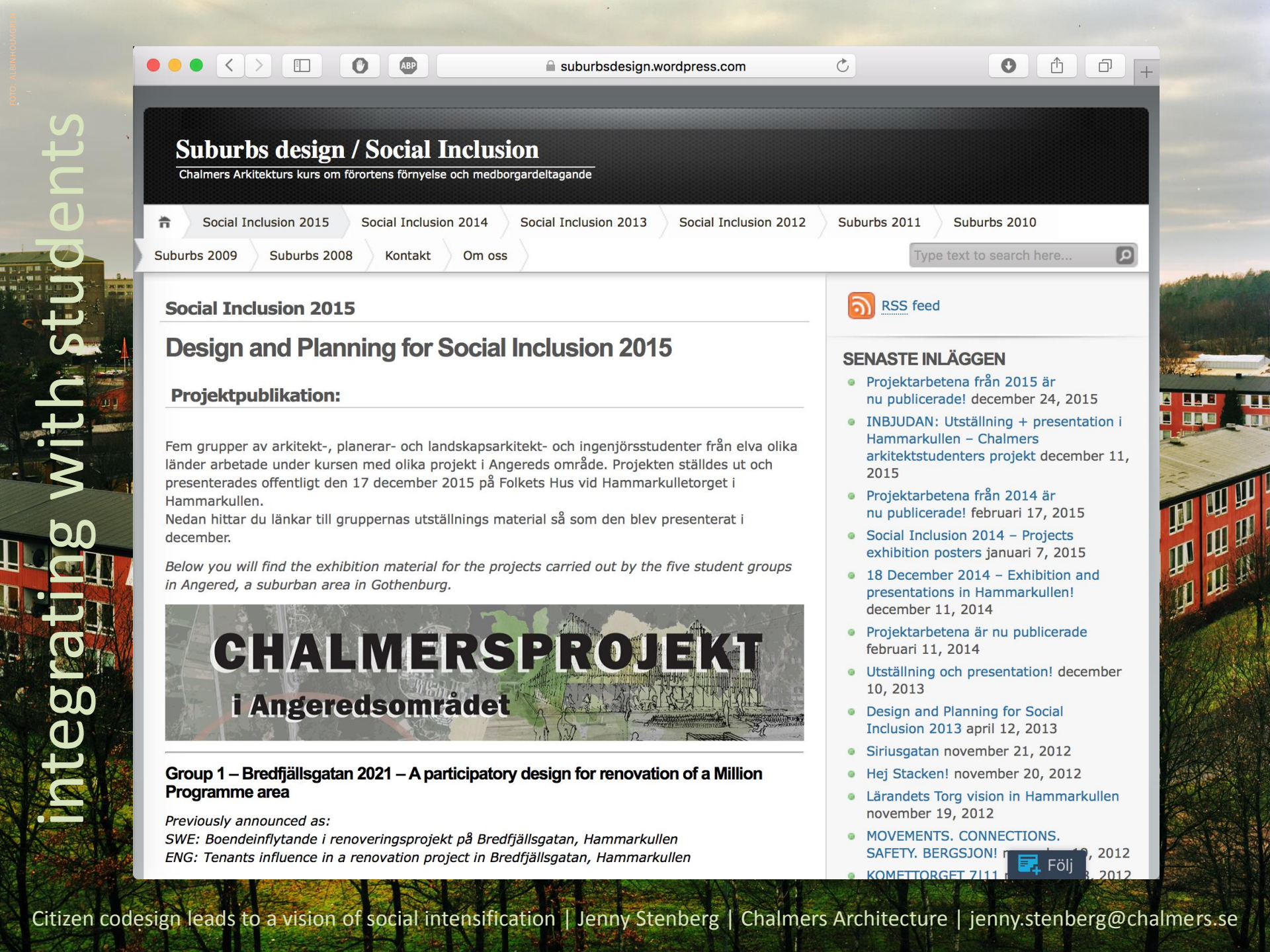
- + Many initiatives to vitalize the city
- Social and economic segregation



A still very dispersed city:

- + Large green areas, great opportunities
- Social, economic and spatial segregation

Photo: Google



suburbsdesign.wordpress.com

Suburbs design / Social Inclusion

Chalmers Arkitekturs kurs om förortens förnyelse och medborgardeltagande

Social Inclusion 2015

Social Inclusion 2014

Social Inclusion 2013

Social Inclusion 2012

Suburbs 2011

Suburbs 2010

Suburbs 2009

Suburbs 2008

Kontakt

Om oss

Type text to search here...

Social Inclusion 2015

Design and Planning for Social Inclusion 2015

Projektpublikation:

Fem grupper av arkitekt-, planerar- och landskapsarkitekt- och ingenjörsstudenter från elva olika länder arbetade under kursen med olika projekt i Angereds område. Projekten ställdes ut och presenterades offentligt den 17 december 2015 på Folkets Hus vid Hammarkulletorget i Hammarkullen.

Nedan hittar du länkar till gruppernas utställnings material så som den blev presenterat i december.

Below you will find the exhibition material for the projects carried out by the five student groups in Angered, a suburban area in Gothenburg.

CHALMERSPROJEKT

i Angeredsområdet

Group 1 – Bredfjällsgatan 2021 – A participatory design for renovation of a Million Programme area

Previously announced as:
SWE: Boendeinflytande i renoveringsprojekt på Bredfjällsgatan, Hammarkullen
ENG: Tenants influence in a renovation project in Bredfjällsgatan, Hammarkullen

RSS feed

SENASTE INLÄGGEN

- [Projektarbetena från 2015 är nu publicerade!](#) december 24, 2015
- [INBJUDAN: Utställning + presentation i Hammarkullen – Chalmers arkitektstudenters projekt](#) december 11, 2015
- [Projektarbetena från 2014 är nu publicerade!](#) februari 17, 2015
- [Social Inclusion 2014 – Projects exhibition posters](#) januari 7, 2015
- [18 December 2014 – Exhibition and presentations in Hammarkullen!](#) december 11, 2014
- [Projektarbetena är nu publicerade](#) februari 11, 2014
- [Utställning och presentation!](#) december 10, 2013
- [Design and Planning for Social Inclusion 2013](#) april 12, 2013
- [Siriusgatan](#) november 21, 2012
- [Hej Stacken!](#) november 20, 2012
- [Lärandets Torg vision in Hammarkullen](#) november 19, 2012
- [MOVEMENTS. CONNECTIONS. SAFETY. BERGSJON!](#) 2012
- [KOMETTORGET 7/11](#) 2012

Följ

Citizen codesign leads to a vision of social intensification | Jenny Stenberg | Chalmers Architecture | jenny.stenberg@chalmers.se

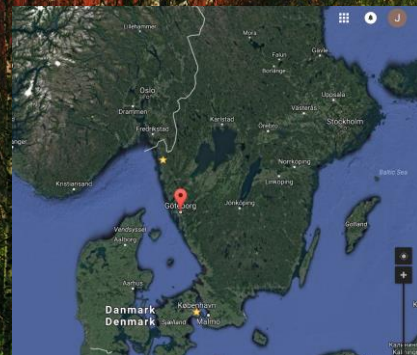
Hammarkullen

is situated 15 minutes with tram
from the central train station

community outreach

Hammar-
kullen

Chalmers



Hammarkullen


The area was constructed during the 1960s and 70s to respond to urgent housing needs and housing degradation in the city centre.



Source: Esri, DigitalGlobe, GeoEye, I-cubed, Earthstar Geographics, Aerogrid, IGN, IGP, swisstopo, and the GIS User Community

Hammarkullen

FOTO: JENNY STENBERG



The area is predominantly free of cars, which is greatly appreciated by the inhabitants. Buildings are sparsely placed, and the greenery is generous. The area includes large-scale housing, lower buildings, detached houses and villas. The public housing company owns all 2,200 rented apartments in Hammarkullen (they bought 900 from a private owner in Feb 2016).

Hammarkullen

The area has long been stigmatized, and there has been little interest on the part of developers in investing in much-needed refurbishment and densification.

It has a relatively high unemployment rate (15.5%) compared to the Gothenburg average (6%). The yearly gross income differs considerably from the average in Gothenburg, with 148,500 SEK in Hammarkullen versus 270,000 SEK in Gothenburg.

Hammarkullen

Carnival attracts 40,000 spectators annually

Of the 8,200 inhabitants, 57% were born abroad. There are 84 nationalities, speaking over one hundred languages.

Citizen codesign leads to a vision of social intensification | Jenny Stenberg | Chalmers Architecture | jenny.stenberg@chalmers.se

Hammarkullen



Citizen codesign leads to a vision of social intensification | Jenny Stenberg | Chalmers Architecture | jenny.stenberg@chalmers.se

Compact Cities?

Students' contribution

Social Intensification | Jonathan Westlin, Jakub Dvorak, Siri Ersson, Luisa Sarvia, Caroline Sollerhed

Their task was to *in cooperation with inhabitants* seeking knowledge about what densification can mean in Hammarkullen – a suburb from the 1960s and 70s.

- *should* it be densified?
- *what* is it to be denser? physical environment? or something completely different?
- and *where* should it then be densified?



Board for citizen dialogue at the tram stop.

Compact Cities?

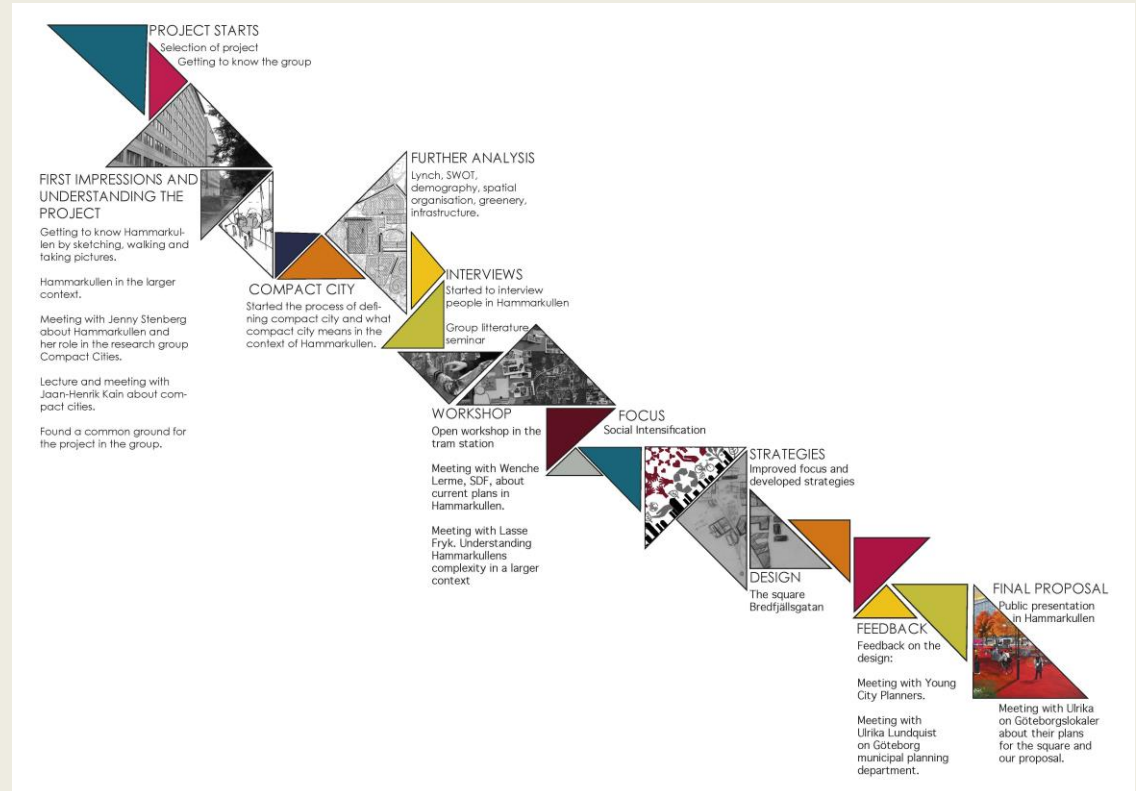
Students' contribution

Social Intensification | Jonathan Westlin, Jakub Dvorak, Siri Ersson, Luisa Sarvia, Caroline Sollerhed

Using codesigning methods.

Results:

- Identified four layers as relevant to a densification strategy.
- Design proposals for two specific places.



The greatest focus on social outdoor life. New buildings should thus contribute to social life.

Compact Cities?

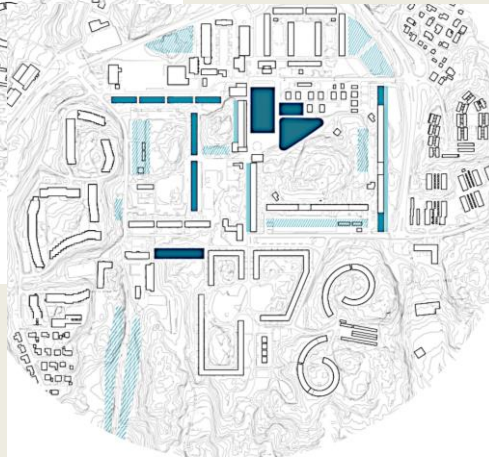
Students' contribution

Social Intensification | Jonathan Westlin, Jakub Dvorak, Siri Ersson, Luisa Sarvia, Caroline Sollerhed



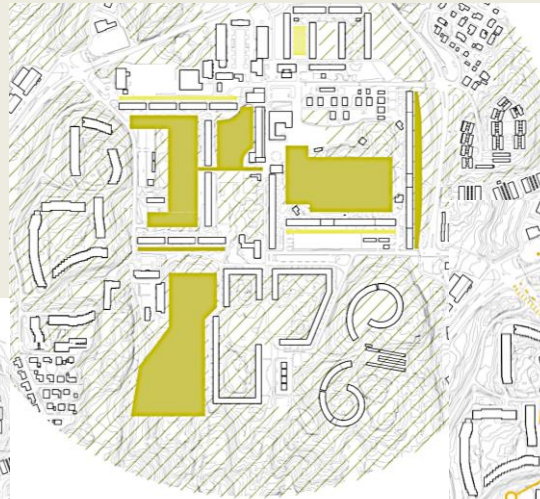
Strengthened meeting places
Connection between meeting places

buildings



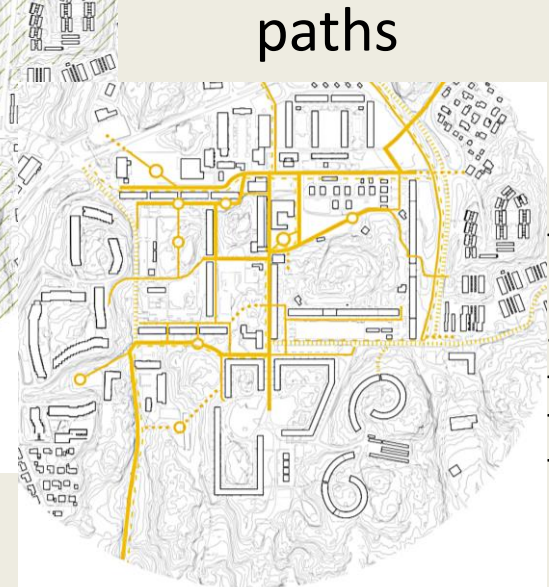
New housing with facilities on first floor
Facilities on first floor in existing building
New building mainly housing
Open up building (adding balconies, semi private spaces and entrances)

meeting
places



Strengthened green structure
New green structure
Existing green structure

green space



Strengthened main paths
Strengthened regular paths
Changed road structure
New path
New or strengthened meeting point
Bicycle path

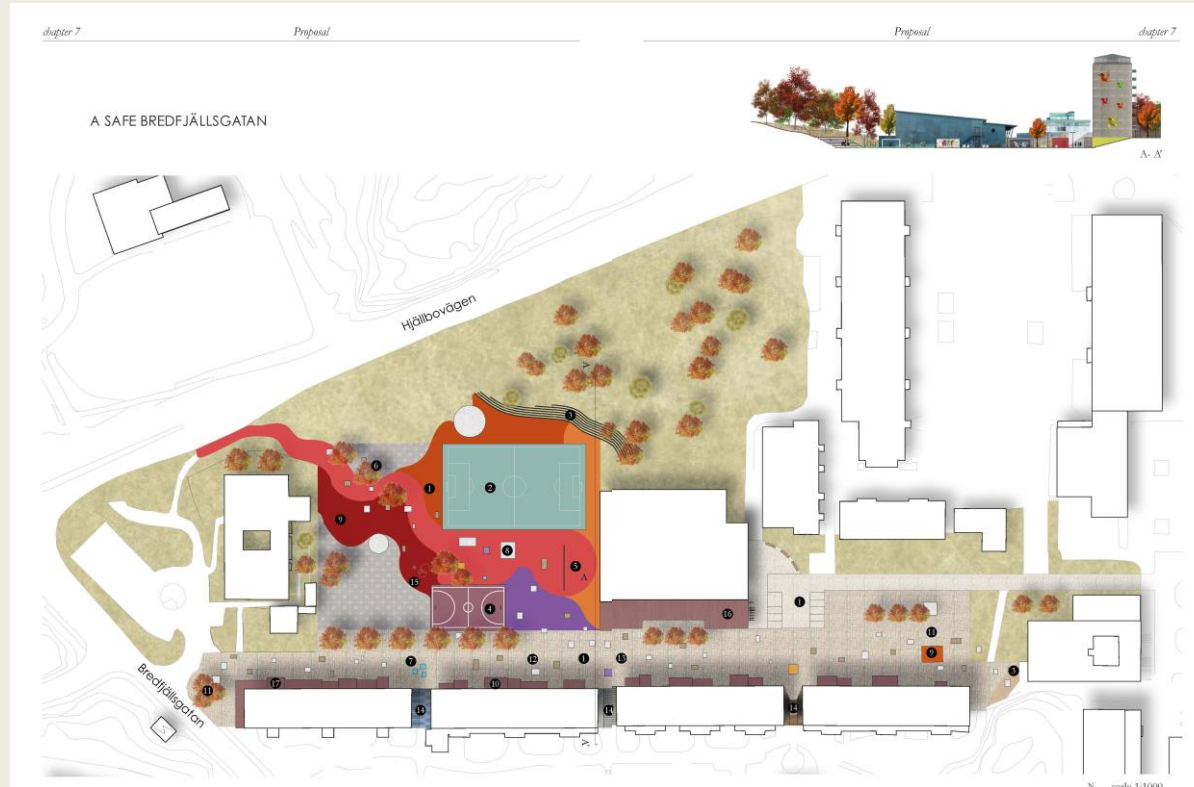
paths

Compact Cities?

Students' contribution

Social Intensification | Jonathan Westlin, Jakub Dvorak, Siri Ersson, Luisa Sarvia, Caroline Sollerhed

Place 1



Proposed space for leisure activity areas at the gravel yard behind Bredfjällsgatan.

Compact Cities?

Students' contribution

Social Intensification | Jonathan Westlin, Jakub Dvorak, Siri Ersson, Luisa Sarvia, Caroline Sollerhed

Place 1



Proposed space for leisure activity areas at the gravel yard behind Bredfjällsgatan.

Compact Cities?

Students' contribution

Social Intensification | Jonathan Westlin, Jakub Dvorak, Siri Ersson, Luisa Sarvia, Caroline Sollerhed

Place 1



Proposed extensions for cultural activities and entrepreneurs at Bredfjällsgatan.

Compact Cities?

Students' contribution

Social Intensification | Jonathan Westlin, Jakub Dvorak, Siri Ersson, Luisa Sarvia, Caroline Sollerhed

Place 2



The square:

Proposed new housing makes the square more spatially confined and creates more social life.

Compact Cities?

Students' contribution

Social Intensification | Jonathan Westlin, Jakub Dvorak, Siri Ersson, Luisa Sarvia, Caroline Sollerhed

Place 2



suburbsdesign.wordpress.com

Proposed new housing makes the square more spatially confined and creates more social life.

Compact Cities?

Students' contribution

Social Intensification | Jonathan Westlin, Jakub Dvorak, Siri Ersson, Luisa Sarvia, Caroline Sollerhed

Place 2



Proposed new housing makes the square more spatially confined and creates more social life.

Citizen codesign leads to a vision of social intensification

Our approach to analysing the students' results was:

- action oriented
- involving methods such as participant observations of meetings and activities
- and analyses of text and drawings

Our paper discusses three potential positive outcomes of linking of education, research and community outreach:

- a) the research activities themselves may improve;
- b) there may be a positive impact on student learning;
- c) better valorization of research may be achieved.

The background of the slide is a photograph of a cityscape. In the foreground, there are green trees with some autumn-colored leaves. In the middle ground, there are several multi-story residential buildings, some with red facades and white window frames. The sky is overcast with grey clouds. The title text is overlaid on the top half of the image.

Citizen codesign leads to a vision of social intensification

a) Quality of research

- extra time resources for studies based on dialogue with inhabitants and other local actors
- new knowledge input from recently educated professionals with a »young« critical perspective
- the inhabitants guided the students towards putting the social perspective as a starting point for urban densification
- enabled a better understanding of what social aspects to focus on
- the locations at which these social problems could best be addressed through physical interventions
- developed design proposals for how the physical structure could be improved – any proposed buildings must contribute to social intensification outdoors
- making the research more relevant
- lead to identification of more pertinent questions for future research



Citizen codesign leads to a vision of social intensification

b) Student learning

- by integrating research and higher education, students had access to researchers' knowledge and the latest research findings
- by integrating learning and community outreach, students gained socially relevant knowledge
- through reality-based studies, they learned how to apply transdisciplinary methods in quite challenging situations
- working with a topic that was still undefined because it was part of on-going research was both challenging and educational
- learned to think about the compact city and its values in different terms – critically assess what aspects actually should be densified
- showed how the design professions could be developed in a new direction – to handle »wicked« problems or complex urban issues
- identified the need for a systemic change in praxis – to make it socially relevant to face present and future urban challenges

Citizen codesign leads to a vision of social intensification

c) Valorization of research results

- relevant to the larger research project on compact cities, and for municipal planners currently densifying Hammarkullen
 - local management influencing the assignments and acting as extra supervisors
 - students have been employed locally to further develop their work
 - *however, valorization of research results higher up in the hierarchies has not been as easy: they had obvious difficulties understanding what the students had done.*
- their perception of themselves as experts in spatial design/planning hindered them from learning from inhabitants
- experiential knowledge of inhabitants is as valuable as their own expertise

Citizen codesign leads to a vision of social intensification

c) Valorization of research results

- relevant to the larger research project on compact cities, and for municipal planners currently densifying Hammarkullen
- local management influencing the assignments and acting as extra supervisors
- students have been employed locally to further develop their work
- *however, valorization of research results higher up in the hierarchies has not been as easy*
- potential for opening up the minds of young people with immigrant backgrounds towards the university and possibilities to pursue higher education as well as for bringing the universities closer to parts of our society where they are currently absent – **widening participation is a governmental directive**



Citizen codesign leads to a vision of social intensification

Topics for future research

- research on the compact city needs to have a strong social focus in parallel with its focus on other aspects
- particularly interesting to investigate further in stigmatized large-scale housing areas built in the 1960s and 70s, because planners'/developers' and inhabitants' perspectives on what adequate densification actually entails seem to differ radically
- education and research have different rationales and time frames – a need to bridge these to avoid leaving students in the position of being too self-sufficient and vulnerable
- the apparent mismatch between what planners say and what they do, emphasizes the need for a better understanding of how the planning system can coproduce urban knowledge and action with other stakeholders, including citizens

Citizen codesign leads to a vision of social intensification

Jenny Stenberg | Associate Professor | Chalmers Architecture | jenny.stenberg@chalmers.se

- research

- community outreach

- education

Master's students:
Jakub Dvorak, Siri Ersson,
Luisa Sarvia, Caroline
Sollerhed and Jonathan
Westlin, and Emilio Brandão,
examiner of the course.



Authors:
Jenny Stenberg
Liane Thuvander
Jaan-Henrik Kain
Marco Adelfio